

2017 Canadian Fabry Disease Guidelines

**Canadian Fabry Disease Treatment Guidelines 2017**

**Sandra Sirrs, Daniel G. Bichet, R. Mark Iwanochko, Aneal Khan, David Moore,  
Gavin Oudit and Michael L. West**

**Toronto Ontario**

**September 22, 2017**

Fabry disease is an X-linked lysosomal storage disease characterized by the development of hypertrophic cardiomyopathy, nephropathy with chronic renal failure and stroke. This condition arises from the deficiency of the lysosomal enzyme alpha-galactosidase A with the resultant accumulation of glycosphingolipids in all cells and tissues. This deposition damages and kills cells resulting in premature death and disability, particularly for affected hemizygotes. Treatment for all patients involves control of cardiovascular risk factors and supportive care for issues related to living with a chronic disease; disease specific treatment with enzyme replacement therapy (ERT) or chaperone therapy may have benefit for some individuals. Recombinant human alpha-galactosidase A enzyme is available in two forms, agalsidase-alfa (Replagal™; Shire Inc.) and agalsidase-beta (Fabrazyme®; Sanofi-Genzyme Corporation). Migalastat (Galafold™; Amicus Therapeutics) is the first chaperone therapy for Fabry disease approved in Canada. Clinical guidelines for the use of ERT in Canada were first developed in 2005 by an expert committee based upon the medical literature and this process has been repeated annually since 2007. As new therapies are developed (chaperone therapy, substrate reduction therapy), these will be incorporated into the Canadian Fabry disease treatment guidelines and the 2017 version of these guidelines has included recommendations on the use of chaperone therapy with migalastat in Fabry patients.

These Fabry disease treatment guidelines currently form the basis for disease specific therapy in Canada, specifically in the multicentre Canadian trial of ERT in Fabry Disease, known as the Canadian Fabry Disease Initiative (CFDI). The CFDI has now been transitioned to a national patient registry to continue to track the progress of Canadian patients. These guidelines are intended to apply to all patients with Fabry disease in Canada regardless of gender and age.

## **Participants**

Dr. Daniel G. Bichet, Dr. Mark Iwanochko, Dr. Aneal Khan, Dr. David Moore, Dr. Gavin Oudit, Dr. Sandra Sirrs and Dr. Michael West

Disclosures for all participants are included below.

## **Process**

Annual literature review has been conducted since the onset of the CFDI to inform the guideline process; for the 2017 guidelines, available literature on Fabry disease published from January 1 2016 to July 28 2017 was determined by an electronic search of Medline and Pubmed using the search terms Fabry and Fabry disease limited to abstracts, English language and research articles in humans. A list of the articles reviewed in 2016 is provided in Appendix 1. Single case reports and review articles

were not included in the review unless new information was presented. Standards of evidence were modified from those previously published (Canadian Task Force on the Periodic Health Examination 1979; see Table 2). Consensus was reached by discussion.

## **Support**

Financial support for this guideline review was from the Canadian Fabry Disease Initiative.

## **Diagnosis of Fabry disease**

The diagnosis of Fabry disease requires the synthesis of clinical, biochemical, molecular and pathologic criteria. Given the challenges with each of these criteria outlined below, it is recommended that a patient have at least 3 of the 4 criteria before making a diagnosis of Fabry disease (van der Tol 2014) although if characteristic pathological findings are present, fewer criteria may be required to point to the correct diagnosis.

### **a) Clinical criteria**

- i) None of the features of classical Fabry disease are diagnostic in their own right. Some features of Fabry disease (for example, nephropathy, hypertrophic cardiomyopathy, stroke) are very nonspecific with a broad differential diagnosis. Other features of Fabry disease (like cornea verticillata, biopsy-proven angiokeratomas) have a more limited differential diagnosis although there are still conditions other than Fabry disease which can cause these more specific findings (e.g. amiodarone therapy can cause similar corneal changes). For this reason, clinical findings alone cannot be used to confirm the diagnosis of Fabry disease although more weight can be given in the diagnostic process to those findings (corneal verticillata, biopsy proven angiokeratomas) of higher specificity.

### **b) Biochemical criteria**

- i) Levels of alpha-galactosidase activity measured in whole blood, plasma or leukocytes that are severely decreased or absent (below 5% of mean) are strongly suggestive of Fabry disease in male hemizygotes or female homozygotes. However, higher levels have been reported in many confirmed cases and are more likely in those patients presenting with a late onset cardiac variant. Females who are Fabry disease heterozygotes may also

have enzyme activity levels that are modestly decreased or even normal despite other clear manifestations of Fabry disease. The presence of reduced levels of enzyme activity in a related male in a kindred should be sought as strong evidence that Fabry disease is present. However, the absence of low enzyme activity in a male does not rule out this diagnosis in a kindred. Documentation of reduced levels of leukocyte alpha-galactosidase activity is the preferred biochemical marker to use in the evaluation of a patient for possible Fabry disease. The absence of reduced levels of enzyme activity in a male in the cohort is strong evidence that Fabry disease is not present.

- ii) Biomarkers in urine and plasma such as globotriaosylceramide (Gb3) and sphingosine-globotriaosylceramide (Lyso-Gb3) are often elevated in patients with Fabry disease although the correlation of these biochemical markers with clinical outcomes remain unclear. Conditions other than Fabry disease can cause elevations in urine Gb3 (Schiffmann 2014). Lyso-Gb3 is a more sensitive marker than Gb3 but still may be normal in confirmed cases, especially in women. The presence of elevated biomarkers then can be used as a feature pointing towards Fabry disease but is not diagnostic. The absence of elevated biomarkers does not rule out a diagnosis of Fabry disease particularly in female heterozygotes.

### **c) Molecular criteria**

- i) Previously reported mutations - There are databases of numerous mutations which have been reported in cases of Fabry disease. However, it is known that there is a high rate of inaccuracy in these databases (Bell 2011). For this reason, the presence of a DNA change that has been reported to cause Fabry disease must be combined with clinical, biochemical and pathological criteria to confirm the diagnosis of Fabry disease
- ii) Variants of uncertain significance (VUS) – For DNA changes which have not been previously reported, there are several models which are often used to try and predict pathogenicity but the accuracy of any of these models is limited with most models correctly predicting that a variant is benign or pathogenic in fewer than 80% of the cases (Walters-Sen 2015). Modeling of VUS in cell lines or other systems can be done by some research labs but is not widely available. The presence of a VUS then should not be used as a diagnostic criterion for Fabry disease consistent with current consensus guidelines (Richards 2015).

- iii) Co-existent disease processes – multiple reports have suggested that GLA mutations can coexist with other mutations causing hypertrophic cardiomyopathy in up to 0.4% of cases (Frustaci 2016 and others). Testing for Fabry disease should be done on all patients with idiopathic hypertrophic cardiomyopathy as part of gene panel screening for genetic causes of this condition. We recommend that patients whose main manifestation of Fabry disease is cardiac hypertrophy undergo comprehensive panel testing to exclude other known diagnoses. If a second diagnosis is present (e.g. a sarcomeric gene mutation), pathologic analysis of a myocardial biopsy should be performed as not all patients with a dual diagnosis may have significant storage material to benefit from ERT or chaperone therapy.

**d) Pathologic criteria**

- i) Characteristic changes suggestive of Fabry disease can be found on biopsies of kidney, heart, skin and other tissues. While a pathologist may be able to identify that storage material is present in tissues, they will not be able to characterize the nature of this accumulated material without doing specific immunohistochemical stains for Gb3, a tool that is not widely available. Also, phenocopies of Fabry disease have been reported where Gb3 storage was documented in tissue (Appelland 2014). Thus, while the finding of characteristic changes in a biopsy is strong evidence for a diagnosis of Fabry disease, it should be combined with at least one other diagnostic feature from the biochemical or molecular categories to confirm the diagnosis). Biopsy of clinically affected tissues can also provide useful prognostic information (such as irreversible changes like the degree of glomerulosclerosis in patients with nephropathy or the degree of fibrosis on a heart biopsy). Biopsy of clinically involved tissue(s) is strongly encouraged in the work up of all patients with Fabry disease. Skin biopsy, while not useful in providing prognostic information, can sometimes help in the diagnostic process (if read by an experienced pathologist) by documenting the presence of glycosphingolipids. This technique, compared with biopsy of internal organs i.e. kidney, is easy to perform and only minimally invasive.

A summary of these diagnostic criteria is provided in Table 1 below.

**Table 1. Summary of diagnostic criteria for Fabry disease\***

<b>Criterion</b>	<b>Relevant finding</b>	<b>Points towards diagnosis</b>	<b>Comment</b>
Clinical features	Cornea verticillata or biopsy-proven angiokeratomas	Presence of either or both of these will contribute 1 point	Need to exclude other causes
Alpha-galactosidase activity in plasma or leukocytes	Below 5%	1 point	Activity may not be reduced in females but low activity in a male member of the family cohort would contribute towards the diagnosis
Elevated plasma and/or urine biomarkers	Above reference range for lab; lyso-Gb3 is preferred	1 point	Conditions other than Fabry disease can elevate biomarkers
Molecular change	Mutation defined in literature as disease causing	1 point	High rate of error in annotation of mutations in available databases; the presence of a VUS should not be used to contribute towards the diagnosis
Pathologic findings	Presence of typical features of Fabry disease on biopsy of involved tissue	2 points in target organs (kidney, heart) 1 point in other organs (skin)	Should be interpreted by a pathologist with expertise in Fabry disease

Diagnosis of Fabry disease is likely in patients with 3 or more points

\*Adapted from Smid BE et al. Uncertain diagnosis of Fabry disease; Consensus recommendation on diagnosis in adults with left ventricular hypertrophy and genetic variants of unknown significance. *Int J Cardiol.* 2014;177:400-8.

## **Disease specific therapy of Fabry disease**

There are currently two forms of disease specific therapy for Fabry disease (ERT and chaperone therapy) and other modalities of treatment including substrate reduction therapy (SRT) are in development (Guerard 2017). The first decision about any patient with a confirmed diagnosis of Fabry disease is SHOULD the patient receive disease specific therapy. In those patients in whom benefit from disease specific therapy can be anticipated, then the next question is WHICH therapy should be used. Disease specific therapy should be considered in all patients with documented Fabry disease, of any age and either sex, who meet the criteria outlined below for disease-specific therapy. In all cases, diagnostic accuracy is essential with exclusion of other possible etiologies. The treating physician has the responsibility of ensuring that there is a high likelihood of patient benefit and a low risk of adverse effects of disease specific therapy. A diagnosis of Fabry disease in the absence of clinical evidence of organ involvement is NOT an indication for disease specific therapy. Some manifestations of Fabry disease are not improved by disease specific therapy such as the risk of stroke while others may be improved by this therapy such as the rate of decline of renal function. Thus, disease specific therapy should be considered when there are manifestations for which this therapy is of proven benefit.

### **Choice of therapy**

ERT was the first form of disease specific therapy developed for Fabry disease and is the form of treatment for which the most robust data on the effects of therapy are available. ERT is appropriate for all patients with Fabry disease, regardless of mutation status. Chaperone therapy, by contrast, only works in patients who have mutations which are amenable to binding by the chaperone and thus can only be considered in a subset of patients. In Canada, the only chaperone for Fabry disease currently approved by Health Canada is migalastat. Migalastat has been shown to have favorable effects versus placebo on renal function and left ventricular hypertrophy (Germain 2016) in patients with amenable mutations. Patients on long term ERT with amenable mutations switched to migalastat (Hughes 2017) showed stability in renal function and cardiac parameters. However, both of these clinical trials involved patients with very mild disease manifestations (eGFR 89-94 ml/min/1.73m<sup>2</sup>, LVMI 94-97 g/m<sup>2</sup>) and did not include patients with high levels of proteinuria (mean albumin/creatinine ratio 13-27 and no patients with nephrotic range proteinuria) which is a known risk factor for adverse cardiovascular and renal events in Fabry disease. These trials are also of short duration (18-24 months). Published data are not yet available on the effects of migalastat in patients with more advanced disease or with duration of therapy beyond 2 years. It should also be noted that switching from ERT to oral therapy with migalastat

did not result in an improvement in quality of life indices which remained stable through the switch (Hughes 2017).

To determine if a patient has an amenable mutation, clinicians can look up the mutation in a database provided by the manufacturer (<http://www.galafoldamenabilitytable.com/hcp/>). The definition of an amenable mutation is one that increases activity of alpha galactosidase A in an *in vitro* cell culture system (human embryonic kidney or HEK cells) by 1.2 times the baseline activity with an absolute value for enzyme activity of 3% or greater when compared with wildtype values (Benjamin 2017). Many amenable mutations will increase the absolute values of enzyme activity far above 3% of wild type activity but clinicians should be aware of these thresholds to define a mutation as amenable. Clinicians desiring information about the absolute values of enzyme activity (expressed as % of the wild type) of any given mutation when expressed in the HEK assay in the presence of migalastat may request this information from the manufacturer or consult the supplementary tables published by Benjamin (2017). This HEK assay has been shown to correlate with surrogate markers of disease activity like lyso-Gb3 and kidney Gb3 deposits (Benjamin 2017). However, the tools to define an amenable mutation have already evolved (e.g. in the study by Germain *et al* [2016], 17 of the 67 subjects thought to have amenable mutations using an older technique were not amenable by the newer HEK assay). Clinicians need to be aware that GLA mutations thought amenable to chaperone therapy with migalastat could possibly change over time if the defining assay changes. In addition, the amenability status of a GLA mutation should be re-evaluated in Fabry disease patients whose clinical monitoring parameters deteriorate on migalastat therapy.

Choice of therapy needs to be individualized for each patient in discussion with their physician. ERT is the only therapy appropriate for patients who do not have amenable mutations. For patients who do have amenable mutations in whom ERT or chaperone therapy might be possible, several factors to consider include:

1. Degree of organ involvement – there are no published data on the effects of migalastat in Fabry disease patients with more advanced disease (e.g. chronic kidney disease (CKD) stage 2 or higher, more extensive left ventricular hypertrophy or nephrotic range proteinuria). The Canadian label indicates that the drug should not be used in patients with eGFR <30 ml/min/1.73m<sup>2</sup>. In patients with more advanced disease (but whose eGFR is above 30 ml/min/1.73m<sup>2</sup> in whom migalastat therapy may be considered) newly starting on disease specific therapy, in addition to considering treatment with ERT or migalastat, consideration could be given to a third option such starting with ERT and then considering “step down” to oral therapy after 3-5 years if the patient has



a good response although there are not data at present to evaluate this sequential treatment strategy.

2. Patient compliance – some patients, even with advanced disease manifestations, may prefer to switch to migalastat therapy to avoid further intravenous infusions with the possible issues of difficult intravenous access, antidrug antibodies and infusion-associated reactions. However, switching from ERT (where a nurse supervises the infusions) to migalastat therapy (where the patient has to remember to take the pills every second day) may not be appropriate for patients who have difficulty remembering to take their medications or noncompliance with ERT infusions.
  - a. Information on compliance with any form of disease specific therapy should be reviewed on a regular visit (for example by reviewing prescription or infusion records) and the patient should be aware of this review. Patients and physicians should discuss the importance of compliance and agree that the drug will be discontinued for patients who do not meet pre-agreed on thresholds of compliance.
3. Patient age – although oral therapy would be preferable in the treatment of pediatric patients to avoid the need for biweekly venipuncture, migalastat is not licensed in Canada for patients under the age of 18 years. There are also very limited data on the use of migalastat in patients 65 years of age and older although the drug is not specifically contraindicated in this age group.
4. Need for increased surveillance of response to treatment – for patients newly started on any type of disease specific therapy, assessment by their treating physician with relevant investigations is recommended every 6 months for the first 5 years of therapy and then annually thereafter if the patient is stable. However, while the available literature on migalastat suggests that it is non-inferior to ERT, this was a short term study (18 months; Hughes 2017). We would recommend that patients who are switched from ERT to migalastat be followed every 6 months for the first 3-5 years of therapy to ensure their clinical parameters are stable. Patients should be advised PRIOR to starting migalastat that, if their disease parameters deteriorate, a switch to ERT may be recommended by their physician.
  - a. In patients being considered for a switch of disease specific therapy from ERT to migalastat or the reverse, it is important to ensure that assessments of their cardiac (EKG, holter monitor, echocardiogram, cardiac MRI) and renal status (24 hour proteinuria, blood pressure,

eGFR) as well as biomarkers (plasma and/or urine Gb3, lysoGb3) are up to date prior any treatment switch.

### **Choice of ERT and dose**

Although the standard doses of agalsidase alfa (0.2mg/kg) and agalsidase beta (1.0mg/kg) differ, 5 and 8 year follow up data from the CFDI shows that the outcomes of therapy with the two drugs are equivalent (Sirrs 2014; West 2016a) and a recent metanalysis (Pisani 2017) indicated stability of renal and cardiac parameters in patients switched from agalsidase beta to agalsidase alfa during the interval of drug shortages. Also, there is no evidence that one agent should be considered as rescue therapy if there is poor clinical response to the other agent (Goker-Alpan 2015; Tsuboi 2014; Lenders 2015). Data concerning altered dose regimens as a means to affect outcomes are limited with mixed results (Hughes 2013; Schiffmann 2007, Schiffmann 2015). Data from the CFDI suggests that there may be an increased risk of events for the first 6 months after a drug switch (West 2016b) suggesting that optimal management would be to not switch medications if possible. Given the lack of data to support alternative dose and dosing and possible risks associated with the switch, considerations of changing drug, dose or dosing are best done in the setting of a formal clinical trial.

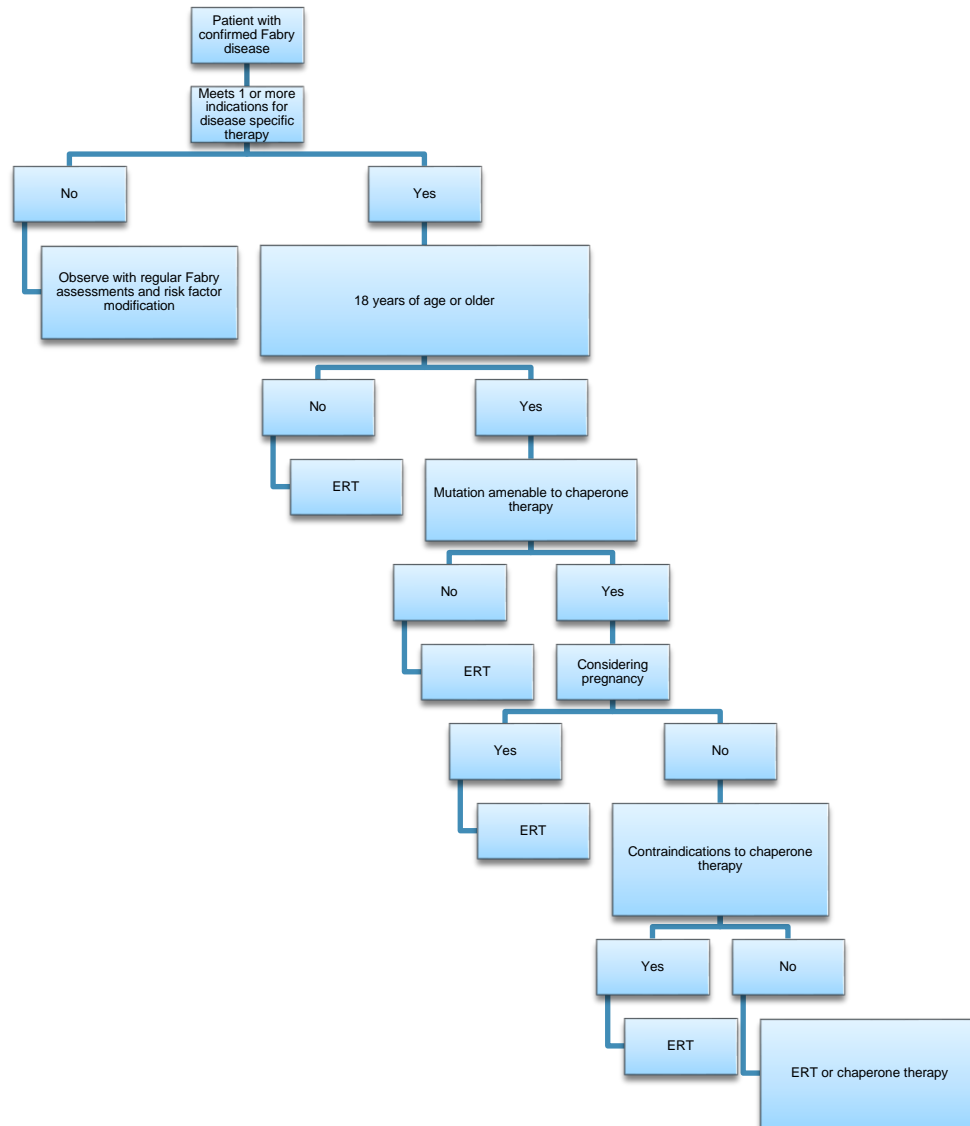


Figure 1. Decision matrix for disease specific therapy in Fabry disease

### Potential benefits of disease specific therapy

Based upon current literature, there is evidence of improvement with disease specific therapy with ERT in some aspects of Fabry disease as detailed below:

- Stabilization of Fabry nephropathy with stable proteinuria and glomerular filtration rate (GFR).
- Stabilization of Fabry cardiomyopathy with stable or declining left ventricular mass index (LVMI), LV wall thickness, improvement of PR interval on EKG.
- Improvement in diarrhea, abdominal cramps or pain, nausea, vomiting and heartburn associated with Fabry disease.

Other clinical features of Fabry disease have not yet been shown to respond to disease specific therapy:

- Tachy or brady arrhythmias
- Stroke or TIAs
- Proteinuria
- Depression
- Hearing loss

### **Potential risks of ERT**

- Increased healthcare costs due to costs of drug purchase and drug administration
- Development of infusion reactions to ERT characterized by fever, chills, edema, rash, nausea and dyspnea.
- Development of anti-agalsidase antibodies; IgG antibodies may be associated with infusion reactions as detailed above, with *in vitro* inactivation of agalsidase or with increased levels of urine and plasma Gb3 as well as plasma lysoGb3 (significance currently unknown); IgE antibodies to agalsidase-beta may be associated with anaphylaxis. IgA and IgM antibodies to agalsidase-alfa have also been identified although the significance of these observations is unknown.

### **Potential risks of migalastat therapy**

- The drug was well tolerated in clinical trials. The most common side effects which occurred more frequently than with placebo were nasopharyngitis and headache. Prescribing physicians are directed to review the product monograph for description of other side effects reported in migalastat treated patients.
- Progression of Fabry disease complications may occur in patients previously stable on ERT if their compliance with migalastat is less than their compliance with ERT.

## **Indications for disease specific therapy**

Indications for disease specific therapy are designed to target patients for such therapies at early stages of disease progression. Data are lacking on the effects of treatment with disease specific therapy in the primary prevention setting (i.e. before there is detectable evidence of end organ involvement) so this cannot be recommended at present. However, it is also important to understand that disease specific therapy will likely be of more benefit in patients in whom irreversible manifestations of Fabry disease (e.g. cardiac fibrosis) have not yet developed. Thus, we recommend that patients who do not meet criteria for disease specific therapy at the time of diagnosis of Fabry disease be followed regularly with full assessment for development of Fabry related

organ involvement so that disease specific therapy, if needed, can be introduced at an early phase in the disease.

## **Renal indications**

Renal disease is a common feature of Fabry disease in males but there are numerous case reports where patients with Fabry disease were found to have an alternate treatable cause for renal dysfunction on renal biopsy (Maixnerova 2013 and others). For this reason, all other causes of reduced GFR and proteinuria (including orthostatic proteinuria) need to be excluded. When reduction of GFR is present, the negative effects on GFR by concurrent medications such as ACE inhibitors, angiotensin receptor blockers, diuretics, non-steroidal anti-inflammatory drugs and other agents should be excluded. A nephrology consultation may be needed. Consideration should be given to a renal biopsy if there is any doubt as to the diagnosis. In addition to disease specific therapy, nonspecific measures appropriate for all patients with kidney disease (smoking cessation, control of dyslipidemia and proteinuria, aggressive control of hypertension) are appropriate in patients with Fabry nephropathy. As ERT does not reduce proteinuria to a significant degree, blockade of the renin-angiotensin system is important in all patients with proteinuria with the goal of reducing urine protein excretion below 500 mg/day (Warnock 2015)

### **Renal Disease Evidence level 1 - Grade B**

1 major criterion or 2 minor criteria required

#### **Major criteria:**

- Fabry nephropathy with reduced GFR

For GFR < 60 ml/min/1.73m<sup>2</sup> chronic kidney disease (CKD) stages 3-5: at least 2 consistent estimates or measurements of GFR over a minimum of 2 months.

For GFR 60 - 90 ml/min/1.73m<sup>2</sup>, CKD stage 2: at least 3 consistent estimates or measurements of GFR over at least 4 months with a GFR slope greater than age-related normal.

For GFR >135 ml/min/1.73m<sup>2</sup>: a 15% decrease in GFR or a GFR slope greater than age-related normal as measured by nuclear medicine technique. Estimated GFR is not accurate in this range and thus cannot be used.

Persisting proteinuria of 500 mg/day/1.73m<sup>2</sup> or greater without other cause.

Findings of high risk pathology (glomerular sclerosis, tubulointerstitial atrophy, fibrosis or vascular sclerosis) on renal biopsy are a major criterion in males only (see comments).

### **Comments:**

1. GFR in adults should be estimated (eGFR) by CKD-EPI formula (Levey 2009) and in children by the Counahan-Barrett formula (Counahan 1976). Measured GFR by nuclear medicine technique should be done in adults or children if there is hyperfiltration or inconsistency in renal function. All other methods of estimating GFR such as the MDRD, Cockcroft and Gault formula or old Schwartz formulas or creatinine clearance are less accurate and should not be used (Tondel 2010; Rombach 2010). In particular, these estimates may result in false hyperfiltration readings, especially in children or teenagers. Calculations of GFR in children may be less accurate and, if treatment decisions are to be made using GFR data, clinicians are encouraged to get more accurate measurements of GFR using nuclear techniques.
2. A renal biopsy is not required as a prelude to therapy. However, if the patient has clinical indications for a renal biopsy, renal pathology in men is a major criterion if features known to be of high risk in predicting progressive renal disease (glomerular sclerosis, tubulointerstitial atrophy and fibrosis or vascular sclerosis) are present. A pathologist with extensive expertise in the interpretation of renal biopsies in patients with Fabry disease is required in order to ascertain the prognostic significance of pathological changes in the renal biopsy. Some changes (such as glycolipid deposit volume in podocytes and foot process width in Fabry nephropathy) correlate with age (Najafian 2011) while other features (glomerular sclerosis, tubulointerstitial atrophy and fibrosis or vascular sclerosis) are more effective in predicting the risk of progressive renal disease. While the presence of lamellar bodies characteristic of Fabry disease can occur in podocytes and in all renal cell types, they are not diagnostic of this condition as they can be observed in sphingolipidoses induced by chloroquine and other drugs. Given these difficulties in interpretation, clinicians are strongly encouraged to involve a pathologist with expertise in Fabry disease in renal biopsy interpretation.

### **Minor criteria:**

- Hyperfiltration: There should be at least two (2) consistent measurements of GFR by nuclear medicine techniques at least one month apart when GFR reaches or exceeds  $135 \text{ ml/min/1.73m}^2$ . Hyperfiltration by eGFR as calculated by any formula is not accurate and thus not acceptable.
- Isolated proteinuria of  $300 \text{ mg/day/1.73m}^2$  or greater than normal for age and gender and persistent for at least one year with exclusion of other causes.
- Renal tubular dysfunction. Fanconi syndrome and/or nephrogenic diabetes insipidus confirmed usually with abnormal water deprivation test and resistance to DDAVP.
- Hypertension of at least one year duration.

- Renal pathology in women may be taken into account as a minor criterion if the patient has indications for renal biopsy. If a renal biopsy is done, the presence of glomerular sclerosis, tubulointerstitial atrophy and fibrosis or vascular sclerosis should be considered a minor criterion in women.

**Comment:** The development of progressive renal disease in women is much less common than in men (Sirrs 2014). Therefore, the presence of positive renal pathology for Fabry disease in women is not a hallmark for progression of renal disease making interpretation of the significance of renal biopsy changes much less clear in women than in men.

### **Cardiac Disease** Evidence level II-2 - Grade B

2 criteria required

#### **Criteria:**

- LV wall thickness >12 mm in males and >11 mm in females
- LV hypertrophy (LVH) by Estes ECG score must be greater than 5
- LV mass index by 2D echo 20% above normal for age
- Increase of LV mass of at least 5 g/m<sup>2</sup>/year, with three measurements over a minimum of 12 months
- Diastolic filling abnormalities by 2D echocardiogram, Grade 2 or Grade 3 diastolic dysfunction as outlined by ASE and/or the presence of speckle tracking abnormalities
- Abnormal –base to apex circumferential strain gradient
- Increased LA size on 2D echo. In parasternal long axis view (PLAX) >40 mm; Left atrial volume index > 34 ml/m<sup>2</sup>
- Cardiac conduction and rhythm abnormalities: AV block, short PR interval, left bundle branch block (LBBB), ventricular or atrial tachyarrhythmias, sinus bradycardia (in the absence of drugs with negative chronotropic activity or other causes)
- Moderate to severe mitral or aortic insufficiency
- Late enhancement of left ventricular wall on cardiac MRI
- Increase of either N-terminal pro-natriuretic brain peptide (NT-proBNP) above the upper limit of normal for age and gender OR an increase of high sensitivity troponin (a surrogate marker of fibrosis) more than 2 times the upper limit of the normal range

## Comments:

1. Many of the cardiac manifestations may be influenced by the presence of hypertension. In the event of significant hypertension, adequate control of hypertension for a 12 month period should be considered first.
2. Cardiac MRI provides significant data above that which is obtained by echocardiography and should be considered as an investigation to quantitate cardiac involvement in Fabry patients being considered for disease specific therapy where access to cardiac MRI is available. If cardiac MRI is not available, echocardiography with contrast also can provide additional information on cardiac status beyond that available with conventional echocardiography.
3. Given the development of cardiac fibrosis with late enhancement on cardiac MRI but normal left ventricular (LV) wall thickness (<12 mm) in a significant fraction of Fabry female heterozygotes (Niemann 2011), a lower threshold of LV wall thickness of  $\geq 11$  mm is recommended as a criterion for disease specific therapy in this group. As women are now recognized to develop left ventricular fibrosis in the absence of LVH, regular cardiac MRI may be preferred to echocardiogram in some women (Niemann 2011). Patients who cannot undergo a contrast MRI to look for fibrosis due to the presence of CKD stage 3 or higher could be screened with high sensitivity troponin levels as these are higher in patients with underlying fibrosis than in patients with no fibrosis (Seydelmann 2016). Consultation with local laboratory to interpret troponin levels (based on local normative data) in the context of renal insufficiency is recommended.
4. The identification of LV diastolic dysfunction by cardiac tissue Doppler imaging is an important feature of Fabry cardiomyopathy as this can be corrected by ERT prior to the development of cardiac fibrosis (Koeppel 2012). Data is lacking at this time on the effects of chaperone therapy on tissue Doppler imaging in patients. All other causes of these cardiac features need to be excluded. A cardiology consultation may be required.
5. Consideration should be given to a left ventricular biopsy if there is any doubt as to the diagnosis. Biopsy may help confirm the diagnosis of Fabry disease in patients in whom the diagnosis is not clear (e.g. those patients where GLA mutation analysis reveals a variant of unknown significance) but the finding of changes on a cardiac biopsy are not an indication for therapy – i.e. cardiac findings on pathology alone are not sufficient indication for treatment.
6. Atypical chest pain in the absence of LVH may indicate the presence of small vessel disease and patients should undergo specific investigation including cardiac flow reserve assessment with a PET scan (Chimenti 2008).
7. Patients with Fabry disease are at high risk of cardiovascular arrhythmias, especially if they have cardiomyopathy and cardiac fibrosis. 24 hour Holter monitoring may not be sufficient to detect all arrhythmias requiring therapy and longer cardiac



monitoring (for example, 14 day Holter monitoring, loop recordings) may be indicated for this patient population.

### **Neurologic Disease** Evidence level III - Grade F

1 major criterion required

- Stroke or TIA documented by a neurologist diagnosed on the basis of clinical features (TIA) and/or CNS imaging criteria consistent with the diagnosis of stroke .
- Sudden onset unilateral hearing loss when other possible causes have been excluded.
- Acute ischemic optic neuropathy when all other possible causes have been excluded

### **Comments:**

1. There is no evidence that disease specific therapy prevents stroke in Fabry disease. However, the presence of serious neurological disease (stroke, TIA, acute hearing loss) often with irreversible CNS damage indicates severe Fabry disease so for this reason, severe neurological events are considered an indication for therapy to try and prevent the development of complications outside the central nervous system. The possible beneficial impact of disease specific therapy in severe Fabry disease warrants consideration of initiating such therapy.

2. Imaging abnormalities (white matter lesions, vessel dolichoectasia, cerebral microbleeds) on their own are not an indication for enzyme replacement as their clinical significance remains unclear.

3. Anti-platelet treatment with ASA and other drugs e.g. clopidogrel, should be the mainstay of treatment unless contraindicated. Aggressive control of vascular risk factors should be implemented in all patients.

4. Drugs that are associated with an increased risk of stroke (such as hormonal forms of contraception) may theoretically increase the risk of stroke in Fabry patients. This possibility should be considered when selecting a method of birth control.

5. Cardioembolic causes of stroke are more likely to be identified with longer duration of recording of cardiac rhythm, which should influence decisions as to appropriate investigations in Fabry patients with a new stroke (e.g. holter monitor for 2+ weeks, loop recorder, Reveal device etc.). Low ejection fraction and atrial fibrillation are independent risk factors for cardioembolic stroke. Consultation with cardiologists and/or stroke neurologists regarding anticoagulation should be sought in patients with these risk factors.

## **Neuropathic Pain** Evidence level I - Grade E

Pain is **NOT** considered an isolated indication for disease specific therapy in most patients.

If pain is the only indication for consideration of disease specific therapy, then consideration for a trial of disease specific therapy could be given as long as all of the following criteria are met:

- a. Prespecified outcomes as to what would constitute a positive effect of disease specific therapy for this symptom are agreed to prior to the trial by the treating physician and the patient. Such outcomes may include tangible benefits such as:
  1. Significant reduction in the need for analgesics
  2. Significant reduction in time lost from work or school due to pain
  3. Significant reduction in the frequency of pain crises etc.
- b. Other outcomes may be appropriate treatment targets in some patients and can be determined prior to a trial of therapy on a patient by patient basis. Improvements in validated pain scoring materials can be included as secondary outcomes but should not replace more tangible outcomes
- c. Adequate data are to be collected prior to the start of the disease specific therapy trial to establish a baseline – e.g. a review of use of prescription medication and time lost from work or school
- d. Agreement is obtained from the patient and documented in the health record that disease specific therapy will be stopped if the prespecified outcomes are not met and no other indications for disease specific therapy are present.

### **Comments:**

1. Short term controlled clinical trials show conflicting data on the efficacy of ERT for pain (Eng 2001; Schiffman 2001) and effects that have been seen are present within 6-12 months although data are conflicting on this point. There is a paucity of controlled clinical trial data documenting the long term efficacy of ERT on pain in patients with Fabry disease. Analysis of controlled data that do exist do not support a durable effect of ERT on pain in patients with Fabry disease (Wyatt 2012; Alegra 2012; El Dib 2016)

2. Switching from ERT to chaperone therapy with migalastat did not result in any changes in patient reported pain (Hughes 2017) so ongoing pain in ERT treated patients is not a reason to consider switching modalities of therapy.

3. All other strategies should be considered as treatments of choice for pain in patients with Fabry disease. These should include physical strategies (avoidance of pain triggers such as temperature extremes etc.), supportive care (management of associated anxiety, depression, and sleep disturbance), and pharmacological strategies (anticonvulsants, NSAIDs in patients with normal renal function, analgesics). Referral to a specialist in the management of chronic pain may be needed.

4. While opiate analgesics may play a role in the treatment of severe acute Fabry neuropathic pain crises in the emergency room, such agents **should be avoided** where possible in the management of chronic pain in Fabry patients as in patients with other types of non-cancer pain. Recent guidelines on the use of opiates in patients with non-cancer pain have been published (Busse 2017) and are a useful reference for clinicians treating such patients.

#### **Gastrointestinal Disease** Evidence level II-3 - Grade B.

- Significant gastrointestinal symptoms unresponsive to other measures for at least six months or associated with poor growth or significant reduction in quality of life.

#### **Comment:**

There is a high prevalence of positive tests for *H. pylori* and bacterial overgrowth in Fabry patients when compared with controls populations and these patients are more symptomatic than those without overgrowth and respond to targeted therapy. (Franceschi 2015). Patients with prominent GI symptoms should be screened for these complications and have a trial of therapy if appropriate before considering enzyme replacement therapy as a treatment for GI symptoms.

#### **Treatment initiation in patients above the age of 65 years of age**

Age per se is not a contraindication to disease specific therapy. However, there are no studies systematically evaluating the benefits of ERT or chaperone initiation in patients ages 65 and older. Data from international registries (Lidove 2016) show that the non-classic cardiac phenotype of Fabry disease dominates in this age group and that other manifestations of Fabry disease which are responsive to disease specific therapy such as renal events are uncommon. It may be difficult to distinguish Fabry related cardiac events from those related to normal aging processes in patients of this age group. As the benefits of disease specific therapy on progressive cardiac enlargement related to Fabry disease are seen over decades of disease progression, patients in this age group with asymptomatic mild to moderate LVH who are started on such treatment may not always be expected to get benefit from it although patients with other Fabry related symptoms (such as microvascular angina) may benefit from a trial of disease specific

therapy. Supportive care including cardiovascular risk factor modification is likely of even more benefit in the older age group and should therefore be a primary focus of Fabry-related care.

### **Contraindications to disease specific therapy Evidence level II-I - Grade E**

Disease specific therapy is not recommended in the presence of the following:

- Pregnancy and lactation. Pregnancy is a relative contraindication to ERT but patients on migalastat therapy should be advised to stop the chaperone therapy prior to conception and remain off it while breastfeeding and to use adequate contraception while taking migalastat therapy. Patients in whom disease specific therapy is medically advisable during pregnancy should be treated with ERT rather than migalastat therapy. A number of successful pregnancies have been reported in Fabry women receiving both forms of ERT (Kalkum et al 2009; Germain et al 2010 and others).
- Severe disease or concomitant medical condition in which death is expected within a year (absolute contraindication)
- Presence of a severe co-morbid condition such that ERT for Fabry disease is unlikely to significantly improve quality of life (absolute contraindication)
- Other conditions in which the benefit to risk ratio for ERT use is not favourable (absolute contraindication)
- Presence of IgE antibody to ERT; this may be associated with anaphylaxis (absolute contraindication)

### **Withdrawal of disease specific therapy Evidence level II-2 - Grade E**

Consideration should be given to discontinuation of disease specific therapy if there is evidence that the patient is not responding to treatment after a reasonable period of observation, of at least a year.

The treating physician should discuss withdrawal of disease specific therapy with the Fabry disease patient under the following circumstances:

- Patient request.
- Life expectancy less than one year due to severe comorbid illness or due to severe Fabry disease with end stage heart failure if not a candidate for heart transplantation.
- Permanent severe neurocognitive decline of any cause.
- Severe reduction in quality of life and functional status despite disease specific therapy .

- Persistent life threatening or severe infusion associated reactions that do not respond to prophylaxis e.g. anaphylaxis.
- Persisting IgE antibody against agalsidase.
- Lack of response to disease specific therapy in standard dose given for a minimum of 1 year when the sole indication for disease specific therapy is neuropathic pain.
- Lack of response to disease specific therapy in standard dose given for a minimum of 1 year when the sole indication for disease specific therapy is the presence of severe gastrointestinal symptoms.
- Lack of response to disease specific therapy of organ involvement that initially mandated treatment start. In such patients, ongoing cardiovascular risk factor modification may still be indicated and such patients should continue to be followed as data on the history of patients in whom disease specific therapy is stopped because of lack of response is urgently needed
- Poor patient adherence to disease specific therapy,
  - This will be defined differently in different jurisdictions and should be a topic of discussion between the patient and their physician prior to starting disease specific therapy

## **Non-disease specific therapy for patients with Fabry disease**

### **Screening for risk factors for cardiovascular and cerebrovascular disease**

- Diabetes mellitus
- Hypertension
- Hyperlipidemia
- Smoking
- Positive family history of cardiovascular or cerebrovascular disease
- Sedentary life style
- Microalbuminuria
- Chronic kidney disease

These risk factors should be sought out in all patients with Fabry disease and aggressive treatment provided to reduce these influences recognizing that they will promote atherosclerotic vascular disease that would be superimposed on the vascular damage of Fabry disease. Guidelines for the management of blood pressure, lipids, and glycemic control as well as those for the use of anti-platelet agents at high vascular risk should be followed in all adult patients without contraindications.

### **Management of atrial fibrillation**

Patients with Fabry disease who have been diagnosed with atrial fibrillation (either paroxysmal bursts of atrial fibrillation which are sustained for 6 seconds or longer or chronic atrial fibrillation) should be anticoagulated. This is not a patient population in whom the CHADS scoring system should be applied as this scoring system is for patients who do not have underlying heart disease. As almost all adults with Fabry disease will have evidence of infiltration on cardiac T1 imaging, they are considered to have structural heart disease and therefore should be anticoagulated if atrial fibrillation is identified (Yogasundaram 2017).

### **Management of Hypertension**

Hypertension should be diagnosed and promptly treated; treatment values should be directed towards SPRINT target values (Yogasundaram 2017; Kramer 2015; Putko 2015). Blood pressure control is essential to minimize renal and cardiac damage in patients with Fabry disease. Agents that block the renin-angiotensin system (ACE inhibitors, angiotensin-receptor blockers) are considered the first line of therapy.

### **Depression and anxiety**

Depression and anxiety are common in patients with Fabry disease (Ali 2017 and others). Screening with commonly used tools (such as the validated depression and anxiety indices) may help identify patients who would benefit from counseling and/or medical therapy for these symptoms.

**Table 2. Levels of evidence and strength of recommendations**

<b>Level of Evidence</b>	<b>Description</b>
I	Evidence obtained from at least one properly randomized trial.
II-1	Evidence obtained from well-designed controlled trials without randomization.
II-2	Evidence obtained from well-designed cohort or case-controlled analytical studies, preferably from more than one centre or research group.
II-3	Evidence obtained from comparisons between times and places, with or without the intervention. Dramatic results in uncontrolled experiments could also be included in this category.
III	Opinions of respected authorities, based on clinical experience, descriptive studies or reports of expert committees.
<b>Grade</b>	<b>Description</b>
A	There is good evidence to recommend the clinical preventive action
B	There is fair evidence to recommend the clinical preventive action
C	The existing evidence is conflicting and does not allow a recommendation to be made for or against use of the clinical preventive action: however, other factors may influence decision-making.
D	There is fair evidence to recommend against the clinical preventive action.
E	There is good evidence to recommend against the clinical preventive action.
F	There is insufficient evidence (in quantity or quality) to make a recommendation; however, other factors may influence decision making

Table adapted from Canadian Task Force on the Periodic Health Examination. The periodic health examination. CMAJ 1979;121:1193-254.

## **Disclosures**

Dr. Bichet has received consultancy and speaker fees from Sanofi-Genzyme, Shire Inc. and Amicus Therapeutics Inc. These activities and grant support are declared and updated every year for the Department of Medicine, University of Montreal, and Hôpital du Sacré-Coeur, Montreal Quebec.

Dr. Iwanochko has received honoraria, from Sanofi-Genzyme and Shire Inc.

Dr. Khan has received any combination of speaker's fees, travel grants, unrestricted educational grants and research grants from Actelion, Alexion, Biomarin, Cytonet LLC, Horizon Pharma, Sanofi-Genzyme, and Shire Inc. He also has a technology transfer agreement with the University Health Network for gene therapy for Fabry disease.

Dr. Moore has received research, unrestricted educational, and travel grants for attendance at conferences, as well as honoraria for presentations at conferences from Shire Inc. Dr. Moore is further the PI on the Canadian Fabry Stroke Screening Study funded by an unrestricted educational grant from Shire HGT.

Dr. Oudit has received honoraria and unrestricted research grants from Sanofi-Genzyme, has served as an advisor for Glaxo-Smith-Kline and holds a patent for a proteomic biomarker panel for Fabry disease.

Dr. Sirrs has received honoraria, speaker's fees, or travel grants Sanofi-Genzyme, Shire Inc, Actelion, Pfizer, and Alexion and has participated in research projects funded by Sanofi-Genzyme, Shire Inc and BioMarin.

Dr. West has received honoraria, consultancy fees and/or research funding from Actelion Pharmaceutical Inc, Alexion, Amicus Therapeutics, AvroBio, Excelsior Biopharma Inc, Sanofi-Genzyme, Shire Inc and Sumitomo Pharma.



## References cited in the guidelines

Alegria T, Vairo F, de Souza MV et al. Enzyme replacement therapy for Fabry disease: A systematic review and meta-analysis. *Genet Mol Biol.* 2012;35:947-54.

Ali N, Gillespie S and Laney D. Treatment of depression in adults with Fabry disease. *JIMD Reports* DOI10.1007/8904\_2017\_21.

Apelland T, Guide E, Strom EK et al. Familial globotriaosylceramide-associated cardiomyopathy mimicking Fabry disease. *Heart* 2014;100:1793-98.

Bell CJ, Dinwiddie DL, Miller NA et al. Carrier testing for severe childhood recessive diseases by Next-Generation sequencing. *Sci Transl Med.* 2011;3:65ra4. doi: 10.1126/scitranslmed.3001756.

Benjamin E, Valle M, Wu X et al. The validation of pharmacogenetics of the identification of Fabry patients to be treated with migalastat. *Genet Med* advance online publication 22 September 2016.

Busse J, Graigie S, Juurlink D et al. Guideline for opioid therapy and chronic noncancer pain *CMAJ* 2017 May 8;189:E659-66.

Canadian Task Force on the Periodic Health Examination. The periodic health examination. *Can Med Assoc J* 1979;121:1193-254.

Chimenti C, Morgante E, Tanzilli G, Mangieri E, Critelli G, Gaudio C, Russo MA, Frustaci A. Angina in Fabry disease reflects coronary small vessel disease. *Circulation Heart Failure* 2008;1:161-169.

Counahan R, Chantler C, Ghazali SI, Kirkwood B, Rose F, Barratt TM. Estimation of glomerular filtration rate from plasma creatinine concentration in children. *Archives of Diseases of Childhood* 1976;51:875-878.

Data on file at Genzyme:

[http://www.genzymeclinicalresearch.com/home/search\\_clinical\\_trial\\_results/fabrazyme\\_study3.asp](http://www.genzymeclinicalresearch.com/home/search_clinical_trial_results/fabrazyme_study3.asp)

El Dib R, Gomma H, Carvalho RP et al. Enzyme replacement therapy for Anderson-Fabry disease. *Cochrane Database of Systematic Reviews.* Database of Systematic Reviews. 2016, Issue 7. DOI:10.1002/14651858.CD006663.pub4

Eng CM, Guffon N, Wilcox WR et al. Safety and efficacy of recombinant human alpha-galactosidase A replacement therapy in Fabry's disease. *N Engl J Med*. 2001;345:9-16.

Franceschi F, Zampetti A, Gasparri GGA. Helicobacter pylori and small intestinal bacterial overgrowth in Fabry disease. *Digestive and Liver Diseases*. 2015;47:618-19.

Frustaci A, Russo M, Chimenti C. Paradoxical response to enzyme replacement therapy of Fabry Disease cardiomyopathy. DOI: 10.1161/CIRCIMA.

Germain DP, Bruneval P, Tran TC, Balouet P, Richalet B, Benistan K. Uneventful pregnancy outcome after enzyme replacement therapy with agalsidase beta in a heterozygous female with Fabry disease: A case report. *Eur J Med Genet*. 2010 Mar-Apr;53(2):111-2.

Germain DP, Nicholls H, Bichet DG et al. Treatment of Fabry's disease with the pharmacologic chaperone migalastat. *N Engl J Med* 2016 ; 375:545-55.

Goker-Alpan O, Nedd K, Shankar SP et al. Effect and tolerability of agalsidase alfa in patients with Fabry disease who were treatment naïve or formerly treated with agalsidase beta or agalsidase alfa. *JIMD Reports* 2015 doi:10.1007/8904\_2015\_422.

Guerard N, Oder D, Nordbeck P et al. Lucerastat, an iminosugar for substrate reduction therapy: tolerability, pharmacodynamics, and pharmacokinetics in patients with Fabry disease on enzyme replacement. doi: 10.1002/cpt.790.

Hughes DA, Deegan PB, Milligan A et al. A randomized, double-blind, placebo-controlled, crossover study to assess the efficacy and safety of three dosing schedules of agalsidase alfa enzyme replacement therapy for Fabry disease. *Mol Genet Metab*. 2013;109:269-75.

Hughes D, Nicholls K, Shankar SP et al. Oral pharmacological chaperone migalastat compared with enzyme replacement therapy in Fabry disease:18-month results from the randomised phase III ATTRACT study. *J Med Genet* 2017; **54** :288–296.

Kalkum G, Macchiella D, Reinke J, Kölbl H, Beck M. Enzyme replacement therapy with agalsidase alfa in pregnant women with Fabry disease. *Eur J Obstet Gynecol Reprod Biol*. 2009 May;144(1):92-3.

Koeppe S, Neubauer H, Breunig F, Weidemann F, Wanner C, Sandstede J, Machann W, Hahn D, Köstler H, Beer M. MR-based analysis of regional cardiac function in relation to cellular integrity in Fabry disease. *Int J Cardiol* 2012;160:53-58. doi:10.1016/j.ijcard.2011.03.023

- Kramer J, Bijmens B, Stork S et al. Left ventricular geometry and blood pressure as predictors of adverse progression of Fabry cardiomyopathy. PLoS ONE 10(11):e0140627. doi:10.1371/journal.pone.0140627
- Lenders M, Canaan-Kuhl S, Kramer J et al. Patients with Fabry disease after enzyme replacement therapy dose reduction and switch – 2 year follow-up. J Am Soc Nephrol. 2015;doi:10.1681/ASN.20150303337.
- Levey AS, Stevens LA, Schmid CH, Zhang Y, Castro III AF, Feldman HI, Kusek JW, Eggers P, Van Lente F, Greene T, Coresh J, for the CKD-EPI (Chronic Kidney Disease Epidemiology Collaboration). A new equation to estimate glomerular filtration rate. Annals of Internal Medicine 2009;150:604-612.
- Lidove O, Barbey F, Niu DM et al. Fabry in the older patient: clinical consequences and possibilities for treatment. Molecular Genetics and Metabolism 118;2016: 319-325.
- Maixnerova D, Tesar V, Rysava R et al. The coincidence of IgA nephropathy and Fabry disease. BMC Nephrology. 2013;14:6.
- Najafian B, Svarstad E, Bostad L et al. Progressive podocyte injury and globotriaosylceramide accumulation in young patients with Fabry disease. Kidney Int. 2011;79:663-70.
- Niemann M, Herrmann S, Hu K, Breunig F, Strotmann J, Beer M, Machann W, Voelker W, Ertl G, Wanner C, Weidemann F. Differences in Fabry cardiomyopathy between female and male patients: consequences for diagnostic assessment. Journal of the American College of Cardiology Cardiovascular Imaging. 2011;4:592-601.
- Pisani A, Bruzzese D, Sabbatini M et al. Switch to agalsidase alfa after shortage of agalsidase beta in Fabry disease: a systematic review and meta-analysis of the literature. Genet Med advance online publication 8 September 2016. PLoS ONE 11(8):e0161330.
- Putko BN, Yogasundaram H, Chow K et al. Normal left-atrial structure and function despite concentric left-ventricular remodelling in a cohort of patients with Anderson-Fabry disease. European Heart Journal – Cardiovascular Imaging doi:10.1093/ehjci/jev057.
- Richards S, Aziz N, Bale S et al. Standards and guidelines for interpretation of sequence variants: a joint consensus recommendation of the American College of Medical Genetics and Genomics and the Association for Molecular Pathology. Genet Med. 2015;17:405-24.
- Rombach SM, Baas MC, ten Berge IJM, Krediet RT, Bemelman FJ, Hollak CEM. The value of estimated GFR in comparison to measured GFR for the assessment of renal function in adult patients with Fabry disease. Nephrology Dialysis and Transplantation

2010;25:2549-2556.

Schiffmann R, Kopp JB, Austin HA et al. Enzyme replacement therapy in Fabry disease: A randomized controlled trial. *JAMA* 2001; 285:2743-9.

Schiffmann R, Askari H, Timmons M, Robinson C, Benko W, Brady RO, Ries M. Weekly enzyme replacement therapy may slow decline of renal function in patients with Fabry disease who are on long-term weekly dosing. *J Am Soc Nephrol* 2007;18:1576-1583.

Schiffmann R, Forni S, Swift C et al. Risk of death in heart disease is associated with elevated urinary globotriaosylceramide. *J Am Heart Assoc.* 2014;3:e000394 doi: 10.1161/JAHA.113.000394.

Schiffmann R, Swift C, Wang X, Blankenship D, Ries M. A prospective 10-year study of individualized, intensified enzyme replacement therapy in advanced Fabry disease. *J Inher Metab Dis.* 2015;38:1129-1136.

Seydelmann N, Liu D, Kramer J et al. High-Sensitivity Troponin: A Clinical Blood Biomarker for Staging Cardiomyopathy in Fabry Disease. *J Am Heart Assoc.* 2016;5:e002839doi:10.1161/JAHA.115.002839.

Smid BE, van der Tol L, Cecchi F et al. Uncertain diagnosis of Fabry disease; Consensus recommendation on diagnosis in adults with left ventricular hypertrophy and genetic variants of unknown significance. *Int J Cardiol.* 2014;177:400-8

Sirrs SM, Bichet DG, Casey R et al. Outcomes of patients followed through the Canadian Fabry Disease Initiative. *Mol Genet Metab.* 2014;11;499-506.

Tondel C, Ramaswami U, Aakre KM, Wijburg F, Bouwman M, Svarstad E. Monitoring renal function in children with Fabry disease: comparisons of measured and creatinine-based estimated glomerular filtration rate. *Nephrology Dialysis and Transplantation* 2010;25:1507-1513.

Tsuboi K and Yamamoto H. Clinical course of patients with Fabry disease who were switched from agalsidase-beta to agalsidase-alfa. *Genet Med.* 2014;10:766-72.

van der Tol L, Smid BE, Poorthuis BJHM et al. A systematic review on screening for Fabry disease: prevalence of individuals with genetic variants of unknown significance. *J Med Genet.* 2014;51:1-9.

Walters-Sen L, Hashimoto S, Thrush DL et al. Variability in pathogenicity prediction programs: impact on clinical diagnostics. *Mol Genet Genomic Med* 2015;3:99-110.

Warnock DG, Thomas CP, Vujkova B et al. Antiproteinuric therapy and Fabry nephropathy: factors associated with preserved kidney function during agalsidase-beta therapy. *J Med Genet.* 2015;52:860-6.

West ML, Bichet DG, Casey R et al. Canadian Fabry Disease Initiative Study (CFDI): 8 year outcomes of a randomized controlled trial of enzyme replacement therapy (ERT). Abstract presentation at the SSIEM Meeting, Rome It Sept 2. 2016a.

West ML, Bichet DG, Casey R et al. Switch of enzyme replacement therapy (ERT) in the Canadian Fabry Disease Initiative Study (CFDI): Intermediate follow-up at three and a half years. Abstract presentation at the Garrod Society Meeting, Halifax Nova Scotia May 19-21 2016b.

Wyatt K, Henley W, Anderson L et al. The effectiveness and cost-effectiveness of enzyme and substrate replacement therapies; a longitudinal cohort study of people with lysosomal storage disorders. *Health Tech Ass.* 2012;16:10.3310/hta16930.

Yogasundaram H, Kim D, Oudit O et al. Clinical features, diagnosis, and management of patients with Anderson-Fabry cardiomyopathy. *Canadian Journal of Cardiology* 33 (2017) 883-897.

## Appendix 1. Articles reviewed in the 2017 revision of the guidelines

Adalsteinsdottir B, Palsson R, Desnick RJ et al. Fabry Disease in families with hypertrophic cardiomyopathy clinical manifestations in the classic and later-onset phenotypes. *Circ Cardiovasc Genet.* 2017;10:e001639. DOI: 10.1161/CIRCGENETICS.116.001639.

Aguiar P, Azevedo O, Pinto R et al. New biomarkers defining a novel early stage of Fabry nephropathy: A diagnostic test study. *Molecular Genetics and Metabolism*121(2017)162-169

Ali N, Gillespie S and Laney D. Treatment of depression in adults with Fabry disease. *JIMD Reports* DOI10.1007/8904\_2017\_21.

Arends M, Biegstraaten M, Hughes D et al. Retrospective study of long-term outcomes of enzyme replacement therapy in Fabry disease: analysis of prognostic factors. *.PLoS ONE* 12(8):e0182379.

Arends M, Linthorst G, Hollak C et al. Discontinuation of enzyme replacement therapy in Fabry disease in the Dutch cohort. *Molecular Genetics and Metabolism* 117 (2016) 194–198.

Arends M, Wanner C, Hughes D et al. Characterization of classical and nonclassical Fabry diseases: A multicenter study. *J Am Soc Nephrol* 28:1631–1641,2017.

Arends M, Wijburg F, Wanner C et al. Favourable effect of early versus late start of enzyme replacement therapy on plasma globotriaosylsphingosine levels in men with classical Fabry disease. *Molecular Genetics and Metabolism* 121 (2017) 157-161.

Auray-Blais C, Lavoie P, Boutin M et al. Biomarkers associated with clinical manifestations in Fabry disease patients with an late-onset cardiac variant mutation. *Clinica Chimica Acta* 466 (2017) 185-193.

Auray-Blais C, Lavoie P, Boutin M et al. High-Risk Screening for Fabry Disease: Analysis by tandem mass spectrometry of Globotriaosylceramide (Gb3) in urine collected on filter paper. *Curr. Protoc. Hum. Genet.* 93:17.26.1-17.26.12. doi:10.1002/cphg.34.

Barba-Romero M, Pinto-Morell G. Gender differences in the application of Spanish criteria for initiation of enzyme replacement therapy for Fabry disease in the Fabry outcome survey. *Int.J.Mol.Sci.* 2016,17, 1965;doi:10.3390/ijms17121965.

Beer AM, Cooper-Knock J, Fletcher S et al. Case report of concurrent Fabry disease and amyotrophic lateral sclerosis supports a common pathway of pathogenesis. ISSN: 2167-8421 (Print) 2167-9223.

Benjamin E, Valle M, Wu X et al. The validation of pharmacogenetics of the identification of Fabry patients to be treated with migalastat. Genet Med advance online publication 22 September 2016.

Bersano A, Markus GS, Quaglini S et al. Clinical pregenetic screening for stroke monogenic diseases. GENS registry. DOI: 10.1161/STROKEAHA.115.012281.

Biancini GB, Jacques CE, Biomolecules damage and redox status abnormalities in Fabry patients before and during enzyme replacement therapy. Clinica Chimica Acta 461 (2016) 41-46.

Biancini GB, Moras AM, Reinhardt LS et al. Globotriaosylsphingosine induces oxidative DNA damage in cultured kidney cells. Nephrology 22 (2017) 490-493.

Busse J, Graigie S, Juurlink D et al. Guideline for opioid therapy and chronic noncancer pain CMAJ 2017 May 8;189:E659-66.

Byeon SK, Kim JY, Lee JS et al. Variations in plasma and urinary lipids in response to enzyme replacement therapy for Fabry disease patients by nano flow UPLC-ESI-MS/MS. Anal Bioanal Chem (2016) 408:2265–2274. DOI10.1007/s00216-016-9318-1.

Cabrera G, Politei J, Antongiovani N et al. Effectiveness of enzyme replacement therapy in Fabry: Long term experience in Argentina Molecular Genetics and Metabolism Reports 11 (2017) 65-68.

Carmona S, Weinschelbaum R, Pardal A et al. Neuro-otological and peripheral nerve involvement in Fabry disease. Audiology Research 2017; volume 7:176.

Cecchi F, Iascone M, Maurizi N et al. Intraoperative diagnosis of Anderson-Fabry disease in patients with obstructive hypertrophic cardiomyopathy undergoing surgical myectomy. JAMA Cardiol.doi:10.1001/jamacardio.2017.2353

Chang W-H, Niu D-M, Lu C-Y et al. Modulation the alternative splicing of GLA (IVS4+919G>A) in Fabry disease. PLoS ONE 12(4): e0175929.

Chen KH, Chien Y, Wang KL et al. Clinical research evaluation of proinflammatory prognostic biomarkers for Fabry cardiomyopathy with enzyme replacement therapy.Canadian Journal of Cardiology 32 (2016) 1221.e1-1221.e9.

Chen KH, Chuo YC, Hsiao CY et al. Amelioration of serum 8-OHdG level by enzyme replacement therapy in patients with Fabry cardiomyopathy. Biochemical and Biophysical Research Communications 486 (2017) 293-299.

Cheng W-C, Wang J-H, Li H-Y et al. Bioevaluation of sixteen ADMDP stereoisomers toward alpha-galactosidase A: Development of a new pharmacological chaperone for the treatment of Fabry disease and potential enhancement of enzyme replacement therapy efficiency. *European Journal of Medicinal Chemistry* 123 (2016)14-20

Chiang H, Wan N, Song I et al. Genetic epidemiological study doesn't support GLA IVS4+919G>A variant is a significant mutation in Fabry disease. *Molecular Genetics and Metabolism* 121 (2017)22–27.

Chien Y, Chien CS, Chiang HC et al. Interleukin-18 deteriorates Fabry cardiomyopathy and contributes to the development of left ventricular hypertrophy in Fabry patients with GLA IVS4+919 G>A mutation. *Oncotarget*, 2016, Vol. 7, (No. 52), pp: 87161-87179.

Choi J, Lee B, Heo S et al. Clinical characteristics and mutation spectrum of GLA in Korean patients with Fabry disease by a nationwide survey. *Choi et al. medicine* (2017) 96:29: 1-5.

Chong Y, Kim M, Koh E et al. Identification of a novel GLA mutation (Y88C) in a Korean family with Fabry nephropathy: a case report. *Chong et al. BMC Medical Genetics* (2016) 17:76: 1-7.

Citro V, Cammisa M, Liguori L et al. The large phenotypic spectrum of Fabry disease requires graduated diagnosis and personalized therapy: a meta-analysis can help to differentiate missense mutations. *Int.J.Mol.Sci.*2016,17, 2010:1-16.

Citro V, Pena-Garcia J, den-Haan H et al. Identification of an allosteric binding site on human lysosomal alpha galactosidase opens the way to new pharmacological chaperones for Fabry disease. *PLoS ONE* 11 (10):e0165463.doi:10.1371/journal.pone.0165463.

Cocozza S, Olivo G, Riccio E et al. Corpus callosum involvement: a useful clue for differentiating Fabry disease from multiple sclerosis. *Neuroradiology* (2017) 59:563-570 DOI 10.1007/s00234-017-1829-8.

Cocozza S, Pisani A, Olivo G et al. Alterations of functional connectivity of the motor cortex in Fabry disease. *Neurology* 2017;88:1822-1829.

Colon C, Ortolano S, Melcon-Crespo C et al. Newborn screening for Fabry disease in the north-west of Spain. *Eur J Pediatr* (2017)176:1075–1081.

Concolino D, Amico L, Cappellini MD et al. Home infusion program with enzyme replacement therapy for Fabry disease: the experience of a large Italian collaborative group. *Molecular Genetics and Metabolism Reports* 12 (2017) 85-91.

Coughlan JJ, Elkholy K, O'Brien J et al. Atypical patterns of cardiac involvement in Fabry disease. *BMJ Case Rep* 2016. doi:10.1136/bcr-201.



Csanyi B, Hategan L, Nagy V et al. Identification of a novel GLA gene mutation, p.Ile239Met, in Fabry disease with a predominant cardiac phenotype. *Int Heart J* 2017; 58: 454-45.

De Grief BTA, Hoeijmakers JGH, Wolters EE et al. No Fabry disease in patients presenting with isolated small fiber neuropathy. *PLOS ONE* | DOI:10.1371/journal.pone.01483.

Di Martino MT, Scionti F, Sestito S et al. Genetic variants associated with gastrointestinal symptoms in Fabry disease. *Oncotarget*, 2016, Vol. 7, (No. 52), pp: 85895-85904.

Du Moulin M, Koehn AF, Golsar A et al. The mutation p.D313Y is associated with organ manifestation in Fabry disease. *Clinical Genetics*.2017;1-7.

Echevarria I, Benistan K, Toussaint A et al. X-chromosome inactivation in female patients with Fabry disease. *Clin Genet* 2016;89:44–54.

El Dib R, Gomma H, Carvalho RP et al. Enzyme replacement therapy for Anderson-Fabry disease. *Cochrane Database of Systematic Reviews*. Database of Systematic Reviews 2016, Issue 7. Art.No.: CD006663. DOI:10.1002/14651858.CD006663.pub4

Fall B, Scott R, Mauer M et al. Urinary podocyte loss is increased in patients with Fabry disease and correlates with clinical severity of Fabry nephropathy. *PLoS ONE* 11(12): e0168346. doi:10.1371/journal.pone.0168346.

Favalli V, Disabella E, Molinaro M et al. Genetic screening of Anderson-Fabry disease in pro bands referred from multispecialty clinics. *J Am Coll Cardiol* 2016;68:1037–50.

Faverio P, Binaggia A, Pieruzzi F et al. Progression of obstructive ventilatory disorder in Fabry disease : Only a matter of time?. *Clin Respir J* 2016;00:000–000 DOI:10.1111/crj.12587.

Ferraz MJ, Marques ARA, Appleman MD et al. Lysosomal glycosphingolipid catabolism by acid ceramidase: formation of glycosphingoid bases during deficiency of glycosidases. doi:10.1002/1873-3468.12104.

Ferri L, Cavicchi C, Fiumura A et al. Pitfalls in the detection of gross gene rearrangements using MLPA in Fabry disease. *Clinica Chimica Acta* 452 (2016) 82-86.

Frances J, Sahuc P, Dussol B et al. Peripheral nerve involvement in Fabry's disease: Which investigations? A case series and review of the literature. *Neurol*-1797; No. Of Pages 8.

Franzen DP, Nowak A, Haile SR et al Long-term follow-up of pulmonary function in Fabry disease: A bi-center observational study. *PLoS ONE* 12(7): e0180437.

Frustaci A, Chimenti C, Doheny D et al. Evolution of cardiac pathology in classic Fabry disease: Progressive cardiomyocyte enlargement leads to increased cell death and fibrosis, and correlates with severity of ventricular hypertrophy. *International Journal of Cardiology* (2017).

Frustaci A, Russo M, Chimenti C. Paradoxical response to enzyme replacement therapy of Fabry Disease cardiomyopathy. DOI: 10.1161/CIRCIMA.

Gaggl M, Lajic N, Heinze G et al. Screening for Fabry disease by urinary globotriaosylceramide isoforms measurement in patients with left ventricular hypertrophy. *Int. J. Med. Sci.* 2016, Vol. 13.

Ge W, Wei B, Zhu H et al. A novel mutation of  $\alpha$ -galactosidase A gene causes Fabry diseases mimicking primary erythromelalgia in a Chinese family. *International Journal of Neuroscience*, 127:5, 448-453.

Germain DP, Nicholls H, Bichet DG et al. Treatment of Fabry's disease with the pharmacologic chaperone migalastat. *N Engl J Med* 2016 ; 375:545-55. DOI: 10.1056/NEJMoa1510198 GING.116.005078.

Goker-Alpan O, Longo N, McDonald M et al. An open-label clinical trial of agalsidase alfa enzyme replacement therapy in children with Fabry disease who are naïve to enzyme replacement therapy. *Drug design, Development and Therapy* 2016:10 1771–1781.

Goncalves MJ, Mourao AF, Martinho A et. al. Genetic screening of mutations associated with Fabry disease in a nationwide cohort of juvenile idiopathic Arthritis patients. *Front. Med.* 4:12. doi: 10.3389/fmed.2017.00012.

Graziani F, Laurito M, Pieroni M et al. Right ventricular hypertrophy, systolic function, and disease severity in Anderson-Fabry disease: An echocardiographic study. *J Am Soc Echocardiogr* 2017;30:282-91.

Guerard N, Oder D, Nordbeck P et al. Lucerastat, an iminosugar for substrate reduction therapy: tolerability, pharmacodynamics, and pharmacokinetics in patients with Fabry disease on enzyme replacement. doi: 10.1002/cpt.790.

Gundogdu AA, Kotan D and Alemdar M. The frequency of Fabry disease among young cryptogenic stroke patients in the city of Sakarya. *Journal of Stroke and Cerebrovascular Diseases*, Vol. 26 No. 6 (June), 2017: pp 1334-1340.

Hofmann L, Karl F, Sommer C et al. Affective and cognitive behaviour in the alpha-galactosidase A deficient mouse model of Fabry disease. *PLoS ONE* 12(6):e0180601.

Hopkin R, Cabrera G, Charrow J et al. Risk factors for severe clinical events in male and female patients with Fabry disease treated with agalsidase beta enzyme

replacement therapy: data from the Fabry registry. *Molecular Genetics and Metabolism* 119 (2016) 151-159.

Hossain M, Yanagisawa H, Miyajima T et al. The severe clinical phenotype for a heterozygous Fabry female patient correlates to the methylation of non-mutated allele associated with chromosome 10q26 deletion syndrome. *Molecular Genetics and Metabolism* 120 (2017) 173-179.

Hsu TR, Chang FP, Chu TH et al. Correlations between endomyocardial biopsies and cardiac manifestations in Taiwanese patients with the Chinese hotspot IVS4+919G>A Mutation: Data from the Fabry outcome survey. *Int. J. Mol. Sci.* 2017,18, 119.

Hsu TR, Hung SC, Chang FP et al. Later On set Fabry disease, cardiac damage progress in silence. *J Am Coll Cardiol* 2016;68:2554 – 63.

Huang J, Khan A, Au B et al. Lentivector iterations and pre-clinical Scale Up / Toxicity Testing: Targeting Mobilized CD34+ Cells for Correction of Fabry Disease. *Molecular Therapy: Methods & Clinical Development* Vol.5 June 2017.

Huber R, Grittner U, Weidemann F et al. Patent foramen ovale and cryptogenic strokes in the stroke in young Fabry patients study. *Stroke.* 2017;48:30-35. DOI: 10.1161/STROKEAHA.116.013620.

Hughes D, Nicholls K, Shankar SP et al. Oral pharmacological chaperone migalastat compared with enzyme replacement therapy in Fabry disease: 18-month results from the randomised phase III ATTRACT study. *J Med Genet* 2017; **54** :288–296. doi:10.1136/jmedgenet-2016-104178.

Huzmeli C, Candan F, Alaygut D et al. Prevalence of Fabry disease in familial Mediterranean fever patients from Central Anatolia of Turkey. *Biochem Genet* (2016) 54:448-456.

Imbriaco M, Pellegrino T, Piscopo V et al. Cardiac sympathetic neuronal damage precedes myocardial fibrosis in patients with Anderson-Fabry disease. *Eur J Nucl Med Mol Imaging.* DOI10.1007/s00259-017-3778-1.

Jaurretche S, Antogiovanni N and Perreta F. Prevalence of chronic kidney disease in Fabry disease patients: Multicenter cross sectional study in Argentina. *Molecular Genetics and Metabolism Reports* 12 (2017) 41-43.

Kalkum G, Pitz S, Karabul N et al. Paediatric Fabry disease: prognostic significance of ocular changes for disease severity. Kalkum et al. *BMC Ophthalmology* (2016) 16:202.

Kamani MA, Provencal P, Boutin M et al. Glycosphingolipid storage in Fabry mice extends beyond globotriaosylceramide and is affected by ABCB1 depletion. *Future Sci. OA* (2016) 2(4), FSO147. 10.4155/fsoa-2016-0027.

- Kang E, Kim YM, Kim DH et al. Life-threatening bleeding from gastric mucosal angiokeratomas during anticoagulation. A case report of Fabry disease. *Medicine* (2017) 96:6.
- Keber T, Tretjak M, Vujkovic AC et al. Paricalcitol as an antiproteinuric agent can result in the deterioration of renal and heart function in a patient with Fabry disease. *Am J Case Rep*, 2017; 18: 644-648.
- Kim JH, Lee BH, Cho JH et al. Long-term enzyme replacement therapy for Fabry disease: efficacy and unmet needs in cardiac and renal outcomes. *Journal of Human Genetics*(2016) 61,923–929.
- Koh S, Hamano T, Sakai N et al. Neglected visual function impairment associated with cornea verticillate due to Fabry disease. *Internal Medicine Journal* 47 (2017) 969-971.
- Kono Y, Wakabayashi T, Kobayashi M et al. Characteristics of cerebral micro bleeds in patients with Fabry Disease. *Journal of Stroke and Cerebrovascular Diseases*, Vol.25 No. 6 (June), 2016: pp 1320-1325.
- Kozor R, Grieve SM, Than MC et al. Cardiac involvement in genotype-positive Fabry disease patients assessed by cardiovascular MR. *Heart*2016;102:298–302.
- Kramer J, Bijmens B, Stork S et al. Left ventricular geometry and blood pressure as predictors of adverse progression of Fabry cardiomyopathy. *PLoS ONE* 10(11):e0140627. doi:10.1371/journal.pone.0140627.
- Kubo T, Ochi Y, Baba Y et al. Prevalence and clinical features of Fabry disease in Japanese male patients with diagnosis of hypertrophic cardiomyopathy. *Journal of Cardiology* 69 (2017) 302-307
- Labombarda F, Saloux E, Miles G et al. Loss of base-to-apex circumferential strain gradient: A specific pattern of Fabry cardiomyopathy? *Echocardiography*. 2017;34:504–510.
- Laney DA, Clarke V, Foley A et al. The impact of Fabry Disease on reproductive fitness. *JIMD Reports* DOI 10.1007/8904\_2017\_17.
- Lanthier S, Saposnik G, Lebovic G et al. Prevalence of Fabry disease and outcome in young Canadian patients with cryptogenic ischemic cerebrovascular events. *Stroke*. 2017;48:1766-1772. DOI: 10.1161/STROKEAHA.116.016083.
- Lee HJ, Hsu TR, Hung SC et al. A comparison of central nervous system involvement in patients with classical Fabry disease or the later-onset subtype with the IVS4+919G>A mutation. *BMC Neurology* (2017) 17:25 DOI10.1186/s12883-017-0810-9.

Lee HJ, Hung SC, Hsu TR et al. Brain MR imaging findings of cardiac-type Fabry disease with an IVS4+919G> A mutation. *AJNR Am J Neuroradiol* 37:1044-49.

Lee HJ, Park HH, Sohn Y et al.  $\alpha$ -Galactosidase delivery using 30Kc19-human serum albumin nanoparticles for effective treatment of Fabry disease. *Appl Microbiol Biotechnol*(2016)100:10395–10402

Lenders M, Cannan-Kuhl S, Kramer J et al. Patients with Fabry disease after enzyme replacement therapy dose reduction and switch—2-Year Follow-Up. *J Am Soc Nephrol* 27: 952–962, 2016. doi:10.1681/ASN.2015030337.

Lenders M, Hennermann JB, Kurschat C et al. Multicenter female FabryStudy(MFFS)-clinical survey on current treatment of females with Fabry disease. *Orphanet Journal of Rare Diseases*(2016) 11:88

Lenders M, Oder D, Canaan-Kuhl S et al. Impact of immuno suppressive therapy on therapy-neutralizing antibodies in transplanted patients with Fabry disease. doi: 10.1111/joim.12647

Lenders M, Schmitz B, Stypmann J et al. Renal function predicts long-term outcome on enzyme replacement therapy in patients with Fabry disease. *Nephrol Dial Transplant*(2016)0:1–8 doi:10.1093/ndt/gfw334.

Lenders M, Stypmann J, Duning T et al. Serum-Mediated inhibition of enzyme replacement therapy in Fabry disease. *Am Soc Nephrol* 27: 256–264, 2016. doi: 10.1681/ASN.2014121226

Lenders M, Weidemann F, Kurschat C et al. Alpha-Galactosidase A p.A143T, a non-Fbry disease-causing variant. Lenders et al. *Orphanet Journal of Rare Diseases* (2016) 11:54.

Liao HC, Hsu TR, Young L et al. Functional and biological studies of H.-C.Liao et al. / *Molecular Genetics and Metabolism* (2017).

Lidove O, Barbey F, Niu DM et al. Fabry in the older patient: clinical consequences and possibilities for treatment. *Molecular Genetics and Metabolism* 118 (2016) 319-325.

Lidove O, Zeller V, Chicheportiche V et al. Musculoskeletal manifestations of Fabry disease: a retrospective study. *Joint Bone Spine* 83 (2016) 421-426.

Liguori R, Incensi A, De Pasqua S et al. Skin globotriaosylceramide 3 deposits are specific to Fabry disease with classical mutations and associated with small fibre neuropathy. *PLoS ONE*12(7):e0180581.

Lloyd A, Gallop K, Ali S et al. Social preference weights for Fabry disease in the UK discrete choice experiment. *CMRO-2016-FT-0389*.

Lloyd AJ, Gallop K, Ali S et al. Social preference weights for treatments in Fabry disease in the UK: a discrete choice experiment. *Current Medical Research and Opinion*, 33:1, 23-29, DOI: 10.1080/03007995.2016.1232704.

Luis S, Maleszewski J, Young P et al. Previously unreported in women galactosidase alpha pro409Ser variant is associated with Fabry disease. *Circ Cardiovasc Genet*. 2017;10:e001661.

Macklin S, Laney D, Lisi E et al. The psychosocial impact of carrying a debated variant in the GLA gene. *J Genet Counsel* DOI 10.1007/s10897-017-0139-y.

Madsen CV, Bundgaard H, Rasmussen AK et al. Echocardiographic and clinical findings in patients with Fabry disease during long-term enzyme replacement therapy: a nationwide Danish cohort study. *Scandinavian Cardiovascular Journal*, 51:4, 207-216.

Manara R, Carlier RY, Righetto S et al. Basilar artery changes in Fabry disease. *AJNR Am J Neuroradiol* 38:531-36.

Marin-Medina A, Brambila-Tapia AJL, Picos-Cardenas VJ et al. eNOS gene Glu298Asp and 4b/a polymorphisms are associated with renal function parameters in Mexican patients with Fabry disease. *Genetics and Molecular Research* 15 (4): gmr15047802.

Markham A. Migalastat: first global approval. *Drugs*(2016)76:1147–1152 DOI 10.1007/s40265-016-0607-y.

Mignani R, Moschella M, Cenacchi G et al. Different renal phenotypes in related adult males with Fabry disease with the same classic genotype. *MolecularGenetics&GenomicMedicine* 2017;5(4):438–442.

Mignani R, Pleruzzi F, Berri F et al. Fabry stabilization index (FASTEX): an innovative tool for the assessment of clinical stabilization in Fabry disease. *Clinical Kidney Journal*,2016,vol.9,no.5,739–747.

Mirazaian M, Wisse P, Ferraz MJ et al. Accurate quantification of sphingosine-1-phosphate in normal and Fabry disease plasma, cells and tissues by LC-MS/MS with C-encoded natural S1P as internal standard. *Clinica Chimica Acta* 459 (2016) 36-44

Morsbach F, Gordic S, Gruner C et al. Quantitative comparison of 2D and 3D late gadolinium enhancement MR imaging in patients with Fabry disease and hypertrophic cardiomyopathy. *International Journal of Cardiology* 217 (2016) 167-173.

Nagamatsu K, Sekijima Y, Nakamura K et al. Prevalence of Fabry disease and GLA c.196G>6 variant in Japanese stroke patients. *Journal of Human Genetics* (2017) 62, 665-670.

Namer B, Orstavik K, Schmidt R et al. Changes in ionic conductance signature of nociceptive neurons underlying Fabry disease phenotype. DOI: 10.3389/fneur.2017.00335.

Nordin S, Kozor R, Bulluck H et al. Cardiac Fabry disease with late gadolinium enhancement is a chronic inflammatory cardiomyopathy. JACC Vol. 68. No. 15, 2016 OCTOBER 11, 2016:1705–11

Nowak A, Koch G, Huynh-Do U et al. Disease progression modeling to evaluate the effects of enzyme replacement therapy on Kidney Function in Adult Patients with the Classic Phenotype of Fabry disease. Kidney Blood Press Res 2017;42:1-15.

Nowak A, Mechtler T, Kasper DC et al. Correlation of Lyso-Gb3 levels in dried blood spots and sera from patients with classic and Later-Onset Fabry disease. Molecular Genetics and Metabolism 121 (2017)320–324.

Nowak A, Mechtler TP, Desnick RJ et al. Plasma LysoGb3: A useful biomarker for the diagnosis and treatment of Fabry disease heterozygotes. Molecular Genetics and Metabolism 120 (2017) 57-61.

Nowak A, Mechtler TP, Hornemann T et al. Genotype, phenotype and disease severity reflected by serum LysoGb3 levels in patients with Fabry disease. Molecular Genetics and Metabolism (2017).

Oder D, Uceyler N, Liu D et al. Organ manifestations and long-term outcome of Fabry disease in patients with the GLA haplotype D313Y. BMJ Open 2016;6:e01042.

Oder D, Vergho D, Ertl G et al. Case report of a 45-year old female Fabry disease patient carrying two alpha-galactosidase A gene mutation alleles. BMC Medical Genetics (2016) 17:46.

Odler B, Cseh A, Constantin T et al. Long time enzyme replacement therapy stabilizes obstructive lung disease and alters peripheral immune cell subsets in Fabry patients. The Clinical Respiratory Journal (2016) •ISSN1752-6981.

Oikawa M, Sakamoto N, Kobayashi A et al. Familial hypertrophic obstructive cardiomyopathy with the GLA E66Q mutation and zebra body. Oikawa et al. BMC Cardiovascular Disorders (2016) 16:83.

Pagano JJ, Chow K, Khan A et al. Reduced right ventricular native myocardial T1 in Anderson-Fabry disease: comparison to pulmonary hypertension and healthy controls. doi:10.1371 / journal.pone. 0157565. g002.

Palhais B, Dembic M, Sabaratnam R et al. The prevalent deep intronic c.639+919G>A GLA mutation causes pseudoexon activation and Fabry disease by abolishing the

binding of hnRNPA1 and hnRNP A2/B1 to a splicing silencer. *Molecular Genetics and Metabolism* 119 (2016) 258–269.

Pan X, Ouyang Y, Wang Z et al. Genotype: a crucial but not unique factor affecting the clinical phenotypes in Fabry disease.

Petritsch B, Kostler H, Weng AM et al. Myocardial lipid content in Fabry disease: a combined <sup>1</sup>H-MR spectroscopy and MR imaging study at 3 tesla. *BMC Cardiovascular Disorders* (2016) 16:205

Pichette M, Serri K, Page M et al. Impaired left atrial function in Fabry disease: A longitudinal speckle-tracking echocardiography study. *J Am Soc Echocardiogr* 2017;30:170-9.

Pisani A, Bruzzese D, Sabbatini M et al. Switch to agalsidase alfa after shortage of agalsidase beta in Fabry disease: a systematic review and meta-analysis of the literature. *Genet Med* advance online publication 8 September 2016. *PLoS ONE* 11(8):e0161330.

Poli L, Zedde M, Zini A et al. Screening for Fabry disease in patients with ischaemic stroke at young age: the Italian project on stroke in young adults. doi:10.1111/ene.13254.

Politei J, Bouhassira D, Germain DP et al. Pain in Fabry diseases: practical recommendations for diagnosis and treatment. *CNS Neuroscience & Therapeutics* 22 (2016) 568–576.

Politei J, Schenone A.B, Cabrera G et al. Fabry disease and enzyme replacement therapy In classic patients with same mutation: different formulations—different outcome? *Clin Genet* 2016;89:88–9.

Putko BN, Yogasundaram H, Chow K et al. Normal left-atrial structure and function despite concentric left-ventricular remodelling in a cohort of patients with Anderson-Fabry disease. *European Heart Journal – Cardiovascular Imaging* doi:10.1093/ehjci/jev057.

Ripeau D, Amartino H, Cedrolla M et al. Switch from agalsidase beta to agalsidase alfa in the enzyme replacement therapy of patients with Fabry disease in Latin America. *MEDICINA (Buenos Aires)* 2017;77:173-179.

Rob D, Marek J, Dostalova G et al. Uric acid as a marker of mortality and morbidity in Fabry disease. *PLoS ONE* 11(11):e0166290. doi:10.1371/journal.pone.0166290.

Roman IS, Rodriguez ME, Caporossi O et al. Computer assisted retinal vessel tortuosity evaluation in novel mutation Fabry disease. *Retina* 37:592 – 603, 2017.



Rost NS, Cloonan L, Kanakis A et al. Determinants of white matter hyperintensity burden in patients Fabry disease. *Neurology* 2016;86:1880-1886.

Saito O, Kusano E, Akimoto T et al. Prevalence of Fabry disease in dialysis patients: Japan Fabry disease screening study (J-FAST). *Clin Exp Nephrol* (2016) 20:284-293 DOI 10.1007/s10157-105-1146-7.

Sanchez-Fernandez E, Fernandez JMG and Mellet CO. Glycomimetic –based pharmacological chaperones for lysosomal storage disorders: lessons from Gaucher, GM1-gangliosidosis and Fabry diseases. *Chem. Commun.*, 2016. 52-5497.

Sato Y, Ida H, Ohashi T. AntiBlyS antibody reduces the immunere action against enzyme and enhances the efficacy of enzyme replacement therapy in Fabry disease model mice. *Clinical Immunology* 178 (2017) 56–63.

Savary AL, Morello R, Brasse-Lagnel C et al. Enhancing the diagnosis of Fabry disease in cardiology with a targeted information: a before–after control–impact study. *Open Heart* 2017;4:e000567. doi:10.1136.

Schiffmann R, Hughes DA, Linthorst GE et al. Screening, diagnosis, and management of patients with Fabry disease: conclusions from a “kidney disease: improving global outcomes: (KDIGO) controversies conference. *Kidney International* (2017) 91, 284–293.

Schmied C, Nowak A, Gruner C et al. The value of ECG parameters as markers of treatment response in Fabry cardiomyopathy. *Medicine* (2016) 95:40.

Schmitz B, Thorwesten L, Lenders M et al. Physical exercise in patients with Fabry disease-a pilot study. *Int J Sports Med* 2016; 37: 1066–1072.

Seo J, Kim M, Hong G et al. Fabry disease in patients with hypertrophic cardiomyopathy: a practical approach to diagnosis. *Journal of Human Genetics*(2016) 61,775–780.

Seydelmann N, Liu D, Kramer J et al. High-Sensitivity Troponin: A Clinical Blood Biomarker for Staging Cardiomyopathy in Fabry Disease. *J Am Heart Assoc.* 2016;5:e002839doi:10.1161/JAHA.115.002839.

Shen JS, Arning E, West ML et al. Tetrahydrobiopterin deficiency in the pathogenesis of Fabry disease. *Human Molecular Genetics*, 2017, Vol. 26, No.6 1182-1192.

Shen JS, Busch A, Day T et al. Mannose receptor-mediated delivery of moss-made  $\alpha$ -galactosidase A efficiently corrects enzyme deficiency in Fabry mice. *J Inherit Metab Dis* (2016) 39:293–303.

Simoncini C, Chico L, Concolino D et al. Mitochondrial DNA haplogroups may influence Fabry disease phenotype. *Neuroscience Letter* 629 (2016) 58-61.

Sirrs S, Bichet DG, Iwanochko RM et al. Canadian Fabry Disease Treatment Guidelines 2016 [www.garrod.ca](http://www.garrod.ca).

Sivley M, Wallace EL, Warnock DG et al. Conjunctival lymphangiectasia associated with classic Fabry disease. *BJO Online First*, published on May 12, 2017 as 10.1136/bjophthalmol-2016-310088.

Skrunes R, Svarstad E, Larse KK et al. Reaccumulation of globotriaosylceramide in podocytes after agalsidase dose reduction in young Fabry patients. *Nephrol Dial Transplant* (2017) 32:807-813.

Skrunes R, Tondel C, Leh S et al. Long-term dose-dependent agalsidase effects on kidney histology in Fabry disease. *Clin J Am Soc Nephrol* 12: 1470–1479, September, 2017.

Skrunes R, Tondel C, Leh S et al. Long-term dose-dependent agalsidase effects on kidney histology in Fabry disease. *Clin J Am Soc Nephrol* 12:1470–1479.

Song X, Xue S, Zhao J et al. Screening for Fabry's disease in young patients with ischemic stroke in a Chinese population. *ISSN: 0020-7454 (Print) 1543-524*.

Spada M, Kasper D, Pagliardini V et al. Metabolic progression to clinical phenotype in classic Fabry disease. *Italian Journal of Pediatrics* (2017) 43:1 DOI10.1186/s13052-016-0320-1.

Spinelli L, Pellegrino T, Pisani A et al. Relationship between left ventricular diastolic function and myocardial sympathetic denervation measured by 123I-meta-iodobenzylguanidine imaging in Anderson-Fabry disease. *Eur J Nucl Med Mol Imaging* (2016) 43:729–73. DOI10.1007/s00259-015-3273-5.

Stepien KM and Hendriksz Ch. Lipid profile in adult patients with Fabry disease - ten-year follow up. *Molecular Genetics and Metabolism Reports* 13 (2017)3-6.

Suntjens E, Dreschler WA, Hess-Erga J et al. Hearing loss in children with Fabry disease. *J Inherit Metab Dis* DOI10.1007/s10545-017-0051-5.

Taguchi K, Moriyama A, Kodak G et al. The Coexistence of Multiple Myeloma-associated Amyloid Light-chain Amyloidosis and Fabry Disease in a hemodialysis patient. *Intern Med* 56: 841-846, 2017.

Takemura G, Kanamor H, Okada H et al. Ultra structural aspects of vacuolar degeneration of cardiomyocytes in human endomyocardial biopsies. *Cardiovascular Pathology* 30 (2017) 64–71.

Talbot A, Hammerschlag G, Golden J et al. Sleep disturbance, obstructive sleep apnoea and abnormal periodic leg movements: very common problems in Fabry disease. *JIMD Reports* DOI 10.1007/8904\_2016\_549.

Tanislav C, Guenduez D, Liebetrau C et al. Cardiac TroponinI:A Valuable Biomarker Indicating the Cardiac Involvement in Fabry Disease. *PLOS ONE* |DOI:10.1371 / journal.pone.0157640|June20, 2016.

Thonhofer M, Santana AG, Fischer R et al. 5-Fluoro derivatives of 4-*epi*-isofagomine as D-galactosidase inhibitors and potential pharmacological chaperones for GM1-gangliosidosis as well as Fabry's disease. *Carbohydrate Research* 420 (2016) 6-12.

Thurber BL, Germain DP, Perretta F et al. Fabry disease: four case reports on meningioma and a review of the literature on other malignancies. *Molecular Genetics and Metabolism Reports* 11 (2017) 75-80.

Trachoo O, Jittorntam P, Pibalyart S et al. Screening of Fabry disease in patients with end-stage renal disease of unknown etiology: the first Thailand study. *The Journal of Biomedical Research*,201731(1):17–24.

Trimarchi H, Canzonieri R, Schiel A et al. Expression of uPAR in urinary podocytes of patients with Fabry disease. *International Journal of Nephrology* Volume 2017, Article ID 1287289, 7 pages.

Trimarchi H, Canzonieri R, Schiel A et al. Increased urinary CD80 excretion and podocyturia in Fabry disease. *J Transl Med* (2016) 14:289 DOI 10.1186/s12967-016-1049-8.

Trimarchi H, Canzonieri R, Schiel A et al. Podocyturia is significantly elevated in untreated vs treated Fabry adult patients. *J Nephrol* (2016)29:791–797 DOI10.1007/s40620-016-0271-z.

Tsuboi K and Yamamoto H. Efficacy and safety of enzyme-replacement-therapy with agalsidase alfa in 36 treatment-naïve Fabry disease patients. *BMC Pharmacology and Toxicology* (2017) 18:43.

Turkmen K, Guclu A, Sahin G et al. The prevalence of Fabry disease in patients with chronic kidney disease in Turkey: the TURKFAB study. *Kidney Blood Press Res* 2016;41:1016-1024.

Tuttolomondo A, Simonetta I, Duro G et al. Inter-familial and intra-familial phenotypic variability in three Sicilian families with Anderson-Fabry disease. *Oncotarget, Advance Publications* 2017.

Uceyler N, Schroter N, Kafke E et al. Skin globotriaosylceramide 3 load is increased in men with advanced Fabry disease. PLoS ONE 11(11): e0166484. doi:10.1371/journal.pone.0166484.

Van der Tol L, Sminia M, Hollak C et al. Cornea verticillata supports a diagnosis of Fabry disease in non-classical phenotypes :results from the Dutch cohort and a systematic review. Br J Ophthalmol 2016;100:3-8.

Van Der Tol L, Verhamme C, Van Schaik IN et al. In patients with an a-Galactosidase A variant, small nerve fibre assessment cannot confirm a diagnosis of Fabry disease. JIMD Reports DOI 10.1007/8904\_2015\_503.

Verrecchia E, Zampetti A, Antuzzi D et al. They impact of fever/hyperthermia in the diagnosis of Fabry: a retrospective analysis. European Journal of Internal Medicine 32 (2016) 26-30.

Voigt C, Munch J, Avanesov M et al. Early segmental relaxation abnormalities in hypertrophic cardiomyopathy for differential diagnostic of patients with left ventricular hypertrophy. ClinicalCardiology.2017;1-7.

Von der Lippe C, Frich JC, Harris A et al. Experiences of being heterozygous for Fabry disease:a qualitative study. JGenetCounsel(2016)25:1085–1092. DOI 1.1007 s10897-016-9941-1.

Walter T, Knobloch G, Cannan-Kuehl S et al. Segment-by-segment assessment of left ventricular myocardial affection in Anderson-Fabry disease by non-enhanced T1-mapping. Acta Radiologica 2017,Vol.58(8)914–921.

Weidemann F, Maier S, Stork S et al. Usefulness of an implantable loop recorder to detect clinically relevant arrhythmias in patients with advanced Fabry cardiomyopathy. Am J Cardiol 2016;118:264-274.

Wilcox W, Feldt-Rasmussen, Martins AM et al. Improvement of Fabry disease-related gastrointestinal symptoms in a significant proportion of female patients treated with agalsidase beta:data from the Fabry registry. JIMD Reports DOI10.10078904\_2017\_28.

Wilson H, Hopkin R, Madueme P et al. Arrhythmia and clinical cardiac findings in children with Anderson-Fabry disease. Am J Cardiol 2017; 120: 251-255.

Wright JT, Williamson JD, Whelton PK et al. A randomized trial of intensive versus standard blood-pressure control. N Engl J Med 2015;373:2103-16. DOI: 10.1056/NEJMoa1511939.

Yamamoto S, Suzuki H, Sugimura K et al. Focal reduction in cardiac I-Metaiodobenzylguanidine uptake in patients with Anderson-Fabry disease. Circ J 2016; 80:2550–2551.

Yenicerioglu Y, Akdam H, Dursun B et al. Screening Fabry's disease in chronic kidney disease patients not on dialysis: a multicenter study. *Renal Failure*, 2016 VOL.39,NO.1,104–111.

Yilmaz M, Ucar SK,Asci G et al. Preliminary screening results of Fabry disease in kidney transplantation patients: a single-center study. *Transplantation proceedings*,49,420-424(2017).

Yogasundaram H, Kim D, Oudit O et al. Clinical features, diagnosis, and management of patients with Anderson-Fabry cardiomyopathy. *Canadian Journal of Cardiology* 33 (2017) 883-897.

Yuki H, Utsunomiya D, Izumiya Y et al. Improvement in microvascular ischemia after enzyme replacement therapy in Anderson-Fabry diseases. *Circ J* 2017; 81:243–244.

Zizzo C, Monte I, Pisani A et al. Molecular and clinical studies in five index cases with novel mutation in the GLA gene. *Gene*578 (2016) 100–104.